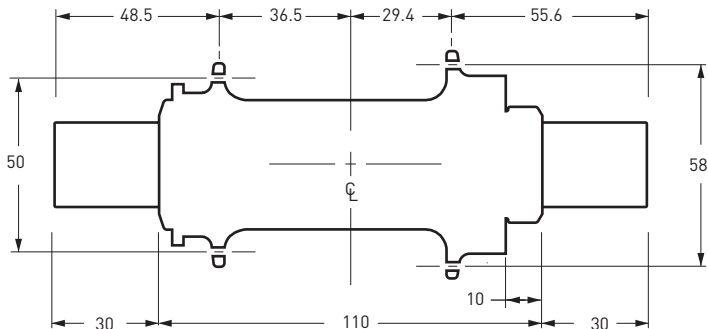


Wheel Building with the Maverick Hub

Drawing not to scale: Measurements in millimeters



We recommend building the front wheel with a cross-3 spoke pattern, using high quality spokes and nipples. It is very important to use the proper spokes when building a disc brake wheel to ensure maximum performance and prevent spoke windup under braking. Radial lacing, 1x and 2x patterns can not be used.

Spoke Recommendations

- DT/Swiss Champion 14 Gauge 2.0 Stainless Spokes
- DT/Swiss Competition 14-15 Gauge 2.0-1.8 Stainless Spokes

Spoke Nipple Recommendations

- DT/Swiss 2.0 Alloy Nipples
- DT/Swiss 2.0 Standard Brass Nickel-Coated Nipples